



treehouse

LONDON

CELEBRATE AT TREEHOUSE

PRIVATE DINING & ENTERTAINING



14-15 Langham Place, London W1B 2QS





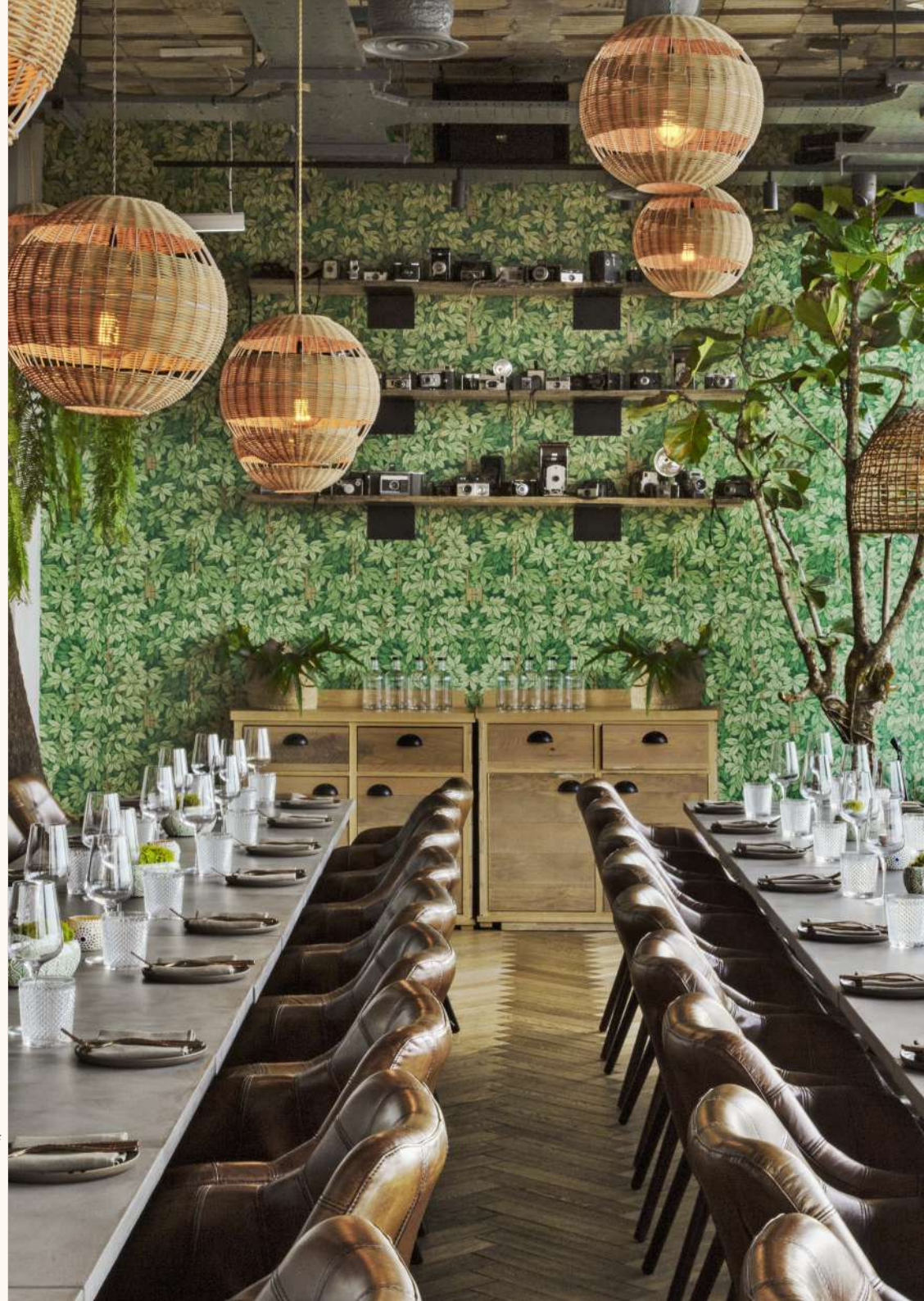
TREEHOUSE HOTEL EVENTS FOR ALL OCCASIONS

Perfectly placed high above London's historic Regent Street, Treehouse Hotel provides the ideal location and backdrop for private events and parties of all sizes. With uninterrupted views of London's iconic skyline, there's no better place to gather and raise a toast. Designed to appeal to the child in all of us, Treehouse is playful, curious, rustic and nostalgic.

Celebrate or entertain in one of the hotel's two thoughtfully designed and tech-ready private rooms or for larger parties, make a statement and take over the hotel's restaurant, Madera at Treehouse London.

For no less impressive occasions, fly up to our rooftop bar, The Nest. A 360-degree vista, a wrap-around terrace and DJ Booth provide all the details for the perfect party.

The Nest is the ultimate venue with its own craft cocktail bar and direct access from the ground floor via a private lift.



MADERA RESTAURANT



AMAZING VIEWS, EAST & WEST, DAY & NIGHT

Madera at Treehouse London with its buzzing atmosphere offers unique interpretations of elevated Mexican cuisine and cocktails served across breakfast, lunch, dinner and at our signature high energy weekend brunch.

As the sun goes down, the lights in the hanging gardens illuminate to usher in the night and all its energy, music and celebrations.



MADERA DAY & NIGHT





As the little sister to Los Angeles based Toca Madera, this ingredient-forward concept is built for the bustling London diner.

Menus focus on farm-fresh plates that amplify the bold, playful flavours of Mexico, using organic, seasonal ingredients served alongside generous choices to host vegan, vegetarian, and gluten-free guests.

The expansive menus comprise of a raw bar, taqueria, starters and salads, and specialties served on lava stones.





The cuisine at Madera is complemented by an organic ingredient-driven drinks list crafted by The Madera Group's Beverage Director Charity Johnston's "farm-to-glass" mixology programme.

Our cocktails showcase individual flavours such as turmeric, chile de arbol, guava, guajillo-mango, prickly pear, butterfly pea flower tea, yuzu and tamarind, enhanced by an extensive collection of premium mezcals and tequilas, as well as a rotating list of international beers and wines.

MADERA COCKTAILS



MADERA PRIVATE DINING

AMAZING VIEWS, EAST & WEST, DAY & NIGHT



Madera at Treehouse London's thoughtful design features a semi-private extension of the restaurant overlooking the stunning views of west London that seats up to 80 guests.

For large events take over the entire restaurant space which can accommodate 130 seated guests.

The private room can also be arranged in a theatre style for launches, presentations and breakfast meetings.





MADERA PRIVATE DINING BIRCH



Gather up to 10 friends for a private lunch or dinner celebration in Birch.

This unique space is bathed in natural light, looking out across the north of the city with views of the BT Tower reaching towards Hampstead Heath.

Host team breakfasts, inspiring board meetings and creative group sessions with the use of an in-built screen, a conference phone, charge points, flip charts and stationery.



MADERA PRIVATE DINING

OAK



The spectacular south-facing Oak private dining room offers a unique backdrop for all occasions with views overlooking London landmarks including the London Eye, Houses of Parliament and Battersea Power Station.

Gather with up to twelve guests and enjoy Madera's modern take on Mexican dishes and bespoke cocktails.

For meetings, team briefings and brainstorm, take advantage of the in-built screen, a conference phone, charge points, flip charts and stationery.



The Nest

in treehouse

THE NEST
ROOFTOP BAR WITH TERRACE & 360° VIEWS



Climb up to the hotel's 16th floor and take your perch in The Nest, our rooftop bar with unparalleled 360-degree views of London.

Settle into the indoor lounge filled with natural light, green foliage and natural materials—where DJs spin the decks from their very own treehouse 'fort'.

Cosy up on the outdoor wraparound terrace decked out with comfortable seating and secret garden hideaways.

The Nest's menus feature playful, market-driven cocktails and bar bites that draw inspiration from trees and showcase local ingredients, as well as offering a curated selection of wine and beer.

Our Chefs are able to offer a variety of canapé and bowl food options for drinks receptions.

A popular choice for private events, take over The Nest for breakfast briefings, drinks receptions and private parties.





WHERE HAPPY *memories* ARE EVOKED
AND NEW ONES TAKE FLIGHT

Step out on the verdant terrace
and take in the sights of the city.
This backdrop provides the perfect
outdoor space for an al fresco drinks
and canapé reception. Heaters and awnings offer
protection from the testing London weather.



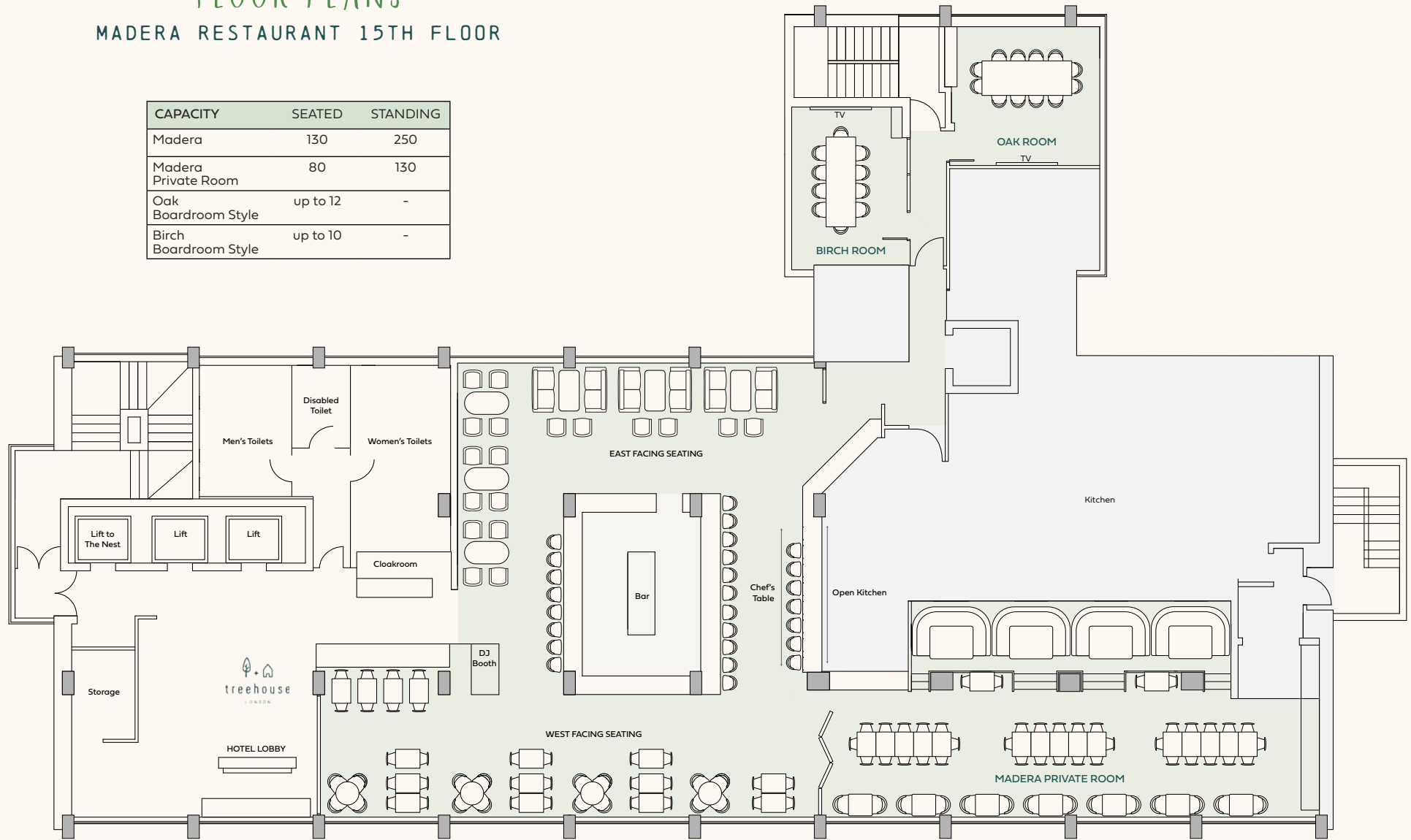


MADERA

FLOOR PLANS

MADERA RESTAURANT 15TH FLOOR

CAPACITY	SEATED	STANDING
Madera	130	250
Madera Private Room	80	130
Oak Boardroom Style	up to 12	-
Birch Boardroom Style	up to 10	-



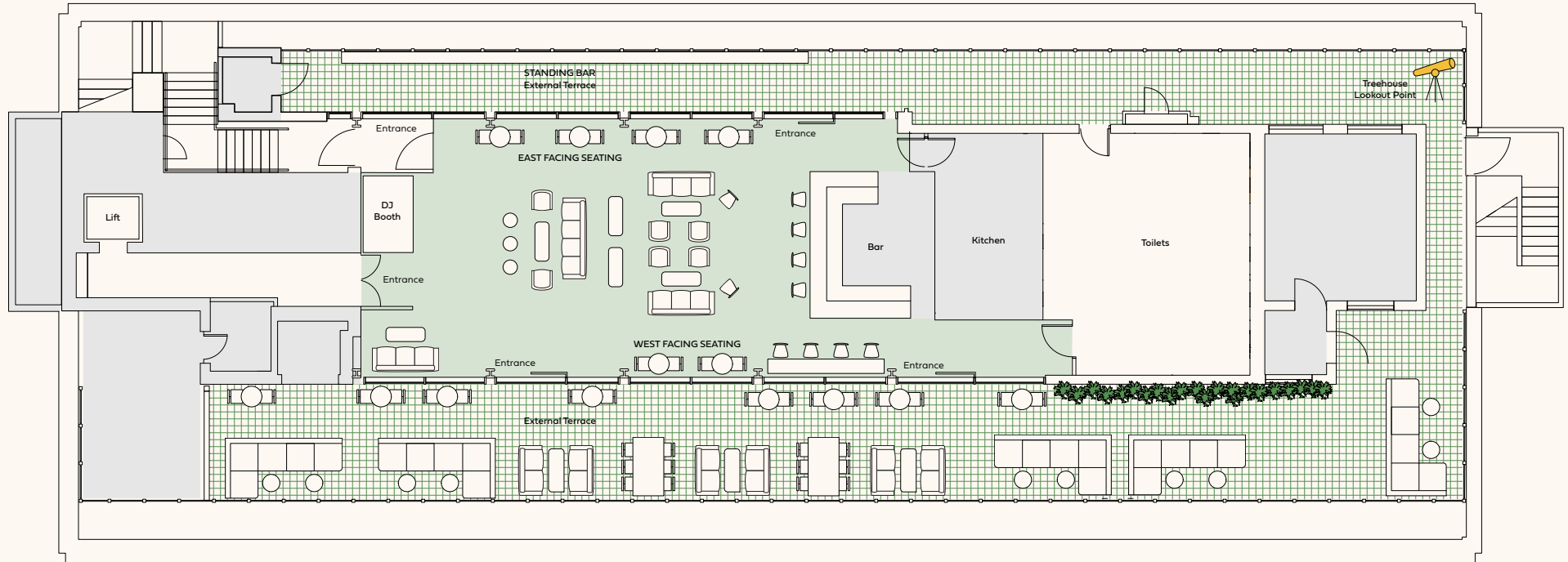
FLOORPLANS: MADERA, OAK AND BIRCH PRIVATE DINING

The Nest
in treehouse

FLOOR PLANS

NEST ROOFTOP BAR 16TH FLOOR

CAPACITY	SEATED	STANDING
The Nest	48	100
The Nest & Roof Terrace	200 Reception Style	



FAQS

USEFUL INFO

CAPACITY

	Seated	Standing
Madera	130	250
Madera Private Room	80	130
Oak	up to 12 boardroom style	
Birch	up to 10 boardroom style	
The Nest	48	100
The Nest & Roof Terrace	200	reception style

TIMINGS

Madera	Access	Service
Breakfast	7am	8am - 10.30am
Lunch	12pm	12pm - 3pm
Dinner	5pm	6pm - 1am

The Nest	Access	Service
Breakfast	7am	8am - 12pm
Lunch	11am	12pm - 5pm
Evening	5pm	6pm - 1am

Timings can be discussed on an individual basis.

SERVICE

A discretionary service charge of 12.5% will be added to your bill. All prices include VAT.

EXTRAS

AV requirements fulfilled
 55" Screens in Oak and Birch
 Bespoke Menus
 Live music or a DJ can be arranged by management approval
 Private cloakroom in The Nest
 Express lift access to The Nest
 Microphones available in The Nest

STAY AT TREEHOUSE

Looking to accommodate guests for your event? Stay in one of the hotel's 95 rooms. Contact our sales team to discuss your requirements.
THLO-sales@treehousehotels.com

CONTACTS

Mikey Burgoyne
 Events Sales Manager
THLO-sales@treehousehotels.com

DISCOVER MORE ABOUT TREEHOUSE



www.treehousehotels.com @staytreehouse
 @thenestintreehouse @maderalondon





14-15 Langham Place, London W1B 2QS